

PROPOSED PLANT LIST TREES / PALMS

Code	DroughtTY.	Botanical Name / Common Name	Specifications
GN	(N)	Coccol nucifera / Coconut Palm	B&B Field Grown, 8' CT, 12" DBH, 6' Wide, 16' OA
EF	(N)	Eugenia foetida / Spanish Stopper	3 Gal., 24" Tall x 24" Wide, 2' OC
PE	(N)	Ptychosperma elegans / Solitaire Palm	B&B Field Grown, 8' CT, 12" DBH, 6' Wide, 16' OA
QV	(N)	Quercus virginiana / Live Oak	B&B Field Grown, 2-1/2" DBH, 6' Wide, 16' OA
TC	(N)	Tabeuia caribbea / Yellow Tab	B&B Field Grown, 2-1/2" DBH, 6' Wide, 12" OC

ACCENTS / SHRUBS / GROUND COVERS

ANN	(N)	Annual Seasonal	84 Pot, 9" OA, 12" OC
JNC	(N)	Juniperus conferta / Shore Juniper	3 Gal., 18" Tall x 18" Wide
PM	(N)	Podocarpus macrocarpa / Podocarpus	3 Gal., 24" Tall x 24" Wide, 2' OC
PP	(N)	Podocarpus pringles / Pringles	3 Gal., 12" Tall x 12" Wide, 18" OC
PX	(N)	Philodendron xanadu / Xanadu	3 Gal., 24" Tall x 24" Wide, 2' OC
SAV	(N)	Schefflera aboriorica variegata / Trinitte	3 Gal., 24" Tall x 24" Wide, 2' OC
VS	(N)	Viburnum odorata / Viburnum	3 Gal., 24" Tall x 24" Wide, 2' OC

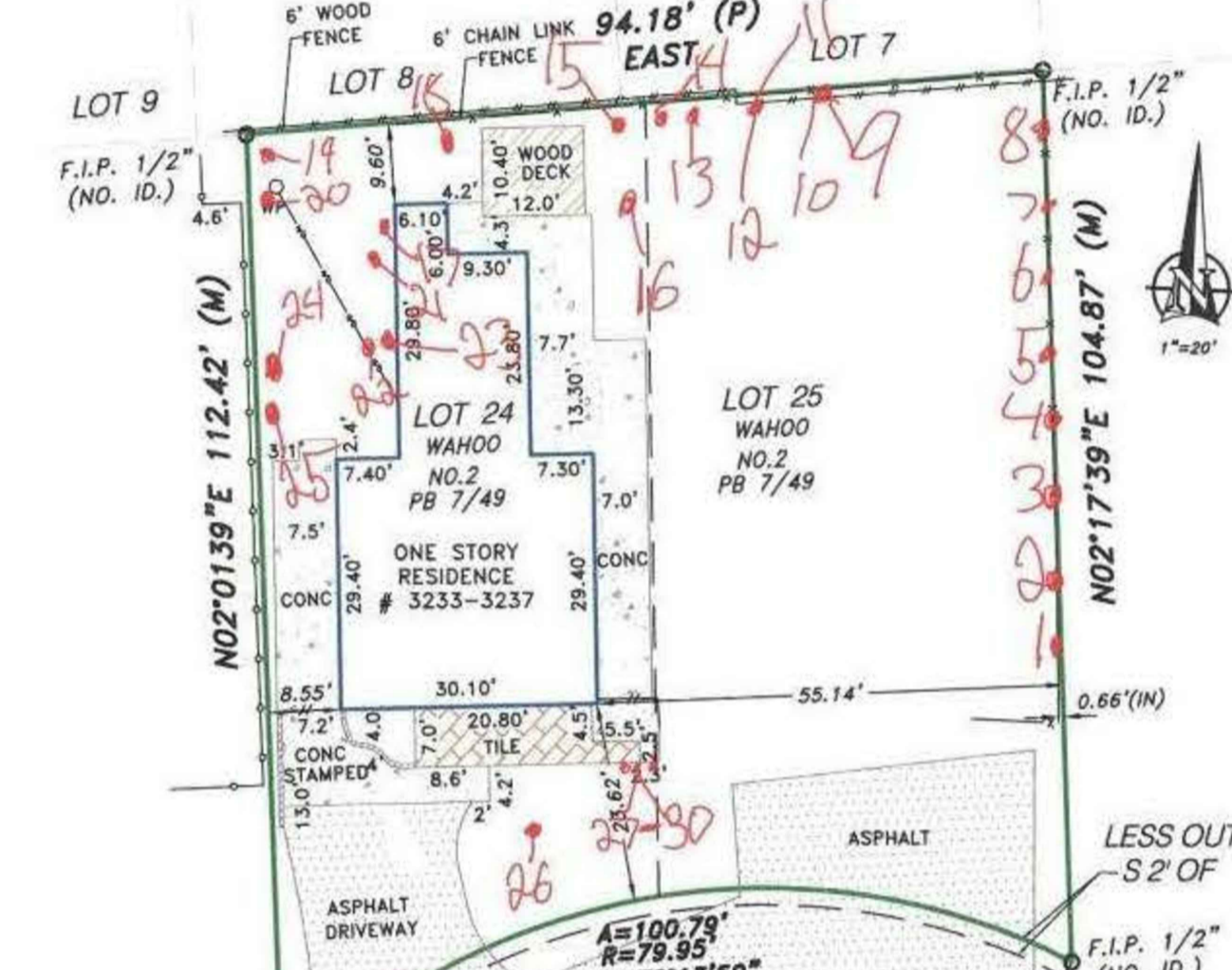
MISCELLANEOUS

SOD	Stenotaphrum secundatum / St. Augustine 'Floritam'	Solid application - no gaps between seams
M	Moderate Drought Tolerance	L Low Drought Tolerance
(N)	Florida Native Plant Species	V Very Drought Tolerant

PRE-CONSTRUCTION MEETING

Pre-construction meeting with Urban Forestry is required before any site work commences and plant material is installed.

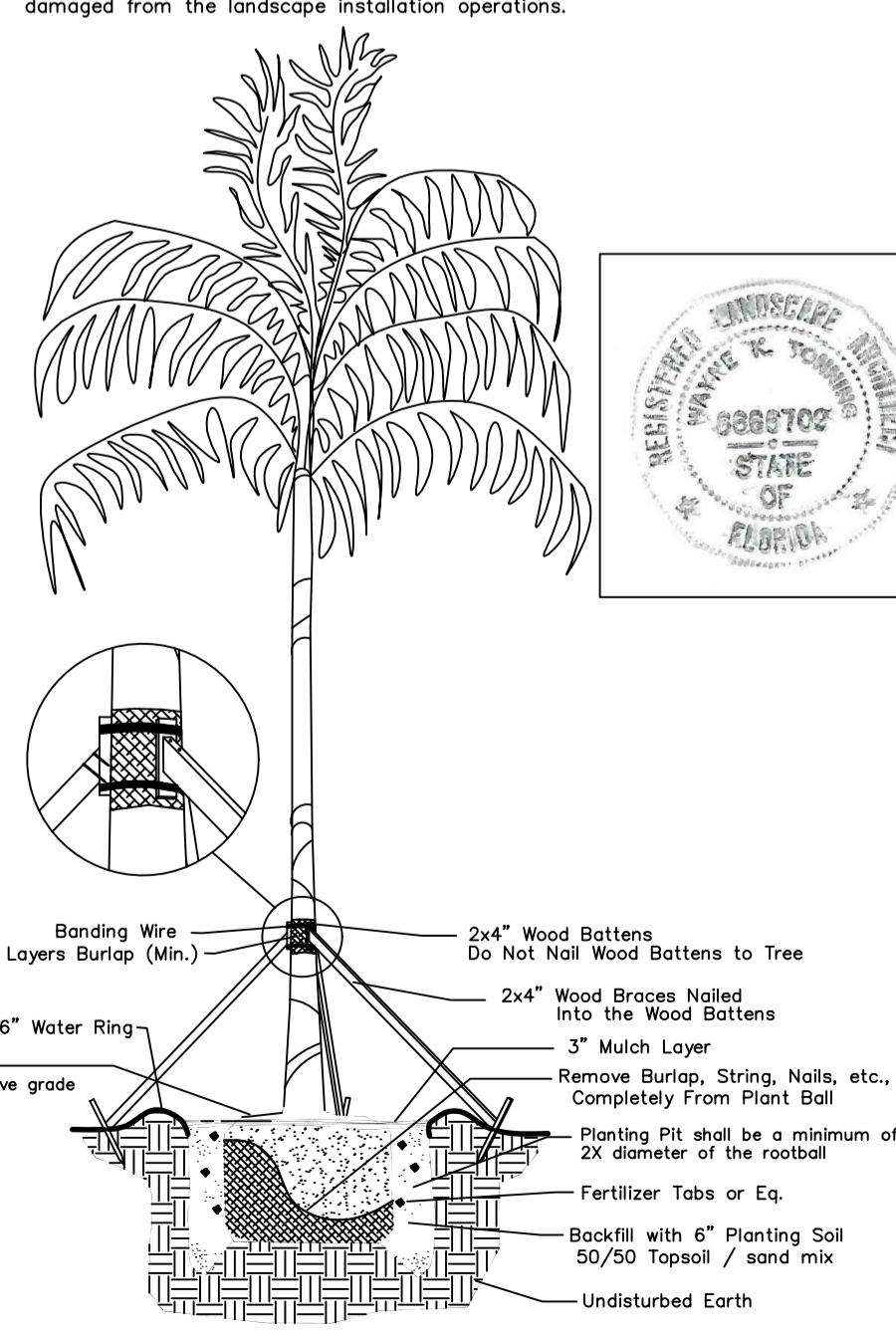
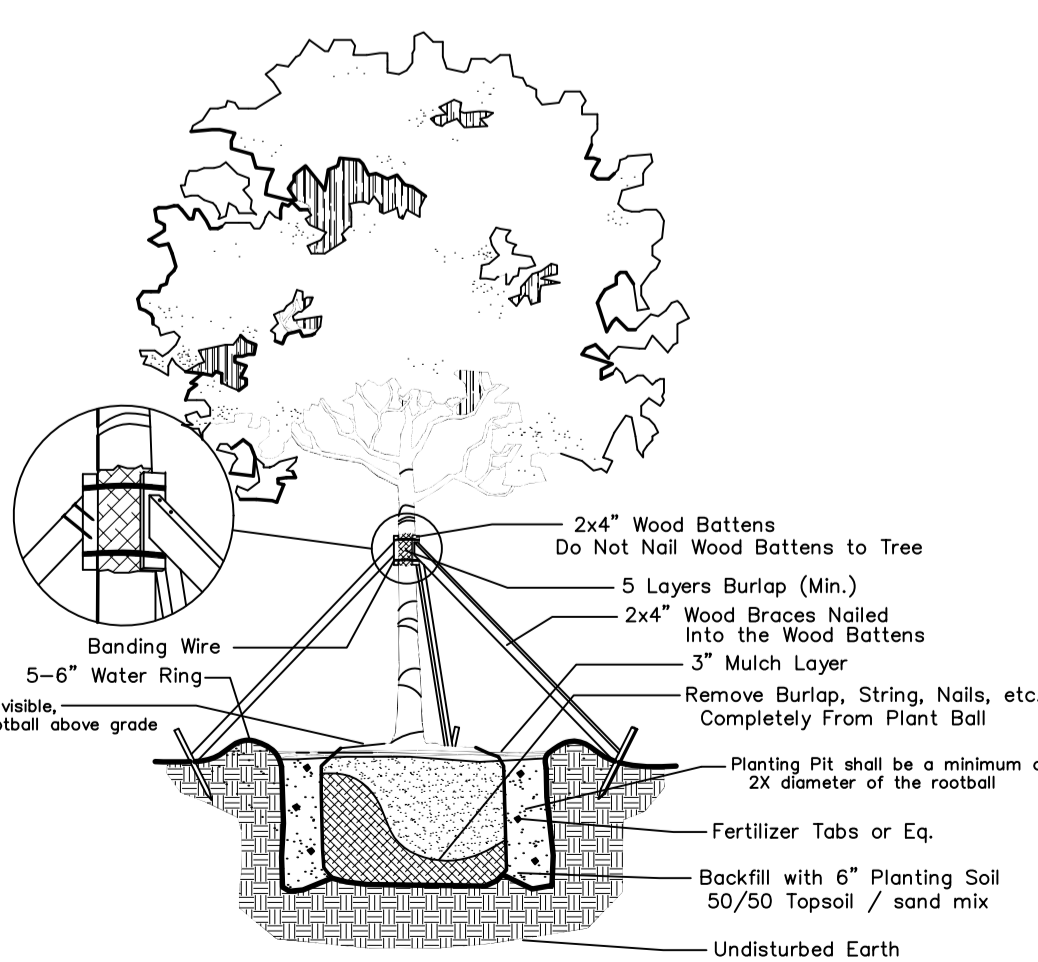
All trees designated as single trunk shall have a single, relatively straight, dominant leader, proper structural branching and even branch distribution. Trees with bark inclusion, tipped branches, and co-dominant trunks will not be accepted. Trees with girdling, intact leader circling and/or plunging roots will be rejected. all road rock, concrete, asphalt and other non natural material be removed from all planting areas prior to landscape installation and be replaced with planting soil prior to landscape installation.



Tree #	Common name	Botanical name	DBH	Height	Condition	Canopy size	Price per in / ft	Value before Diminuti on	Value	Notes	DISPOSITION
1	Sabal palm	Sabal palmetto	8	70%	12x12	\$233.33	\$233.33	\$233.33			Remove
2	Sabal palm	Sabal palmetto	11	70%	12x12	\$233.33	\$233.33	\$233.33			Remove
3	Sabal palm	Sabal palmetto	11	70%	12x12	\$233.33	\$233.33	\$233.33			Remove
4	Sabal palm	Sabal palmetto	12	70%	12x12	\$233.33	\$233.33	\$233.33			Remove
5	Sabal palm	Sabal palmetto	10	70%	12x12	\$233.33	\$233.33	\$233.33			Remove
6	Sabal palm	Sabal palmetto	12	70%	12x12	\$233.33	\$233.33	\$233.33			Remove
7	Sabal palm	Sabal palmetto	15	70%	12x12	\$233.33	\$233.33	\$233.33			Remove
8	Sabal palm	Sabal palmetto	18	70%	12x12	\$233.33	\$233.33	\$233.33			Remove
9	Sabal palm	Sabal palmetto	13	70%	12x12	\$233.33	\$233.33	\$233.33			Remove
10	Sabal palm	Sabal palmetto	13	70%	12x12	\$233.33	\$233.33	\$233.33			Remove
11	Sabal palm	Sabal palmetto	15	70%	12x12	\$233.33	\$233.33	\$233.33		With ficus	Remove
12	Ficus aurea	Ficus aurea	21	20%	22x20	\$314.58	\$6,606.18	\$1,321.24		Growing off Sabal palm trunk	Remove
13	Sabal palm	Sabal palmetto	15	70%	12x12	\$233.33	\$233.33	\$233.33			Remove
14	Sabal palm	Sabal palmetto	14	70%	12x12	\$233.33	\$233.33	\$233.33			Remove
15	Sabal palm	Sabal palmetto	12	70%	12x12	\$233.33	\$233.33	\$233.33			Remove
16	Sabal palm	Sabal palmetto	12	70%	12x12	\$233.33	\$233.33	\$233.33			Remove
17	Schefflera	Schefflera actinophylla			6x4		\$0.00			Invasive	Remove
18	Sabal palm	Sabal palmetto	10	70%	12x12	\$233.33	\$233.33	\$233.33			Remove
19	Sabal palm	Sabal palmetto	12	70%	12x12	\$233.33	\$233.33	\$233.33			Remove
20	Sabal palm	Sabal palmetto	14	70%	12x12	\$233.33	\$233.33	\$233.33			Remove
21	Schefflera	Schefflera actinophylla			20x15		\$0.00			Invasive	Remove
22	Schefflera	Schefflera actinophylla			5x5		\$0.00			Invasive	Remove
23	Schefflera	Schefflera actinophylla			8x8		\$0.00			Invasive	Remove
24	Brazilian pepp	Schinus terebinthifolia			20x20		\$0.00			Invasive	Remove
25	Schefflera	Schefflera actinophylla			4x4		\$0.00			Invasive	Remove
26	Gumbo limbo	Bursera simaruba	13	60%	12x9	\$312.50	\$4,062.50	\$2,437.50			Remove
27	Ficus nitida	Ficus microcarpa			32x24		\$0.00			Invasive	Remove
28	Sabal palm	Sabal palmetto	9	70%	12x12	\$233.33	\$233.33	\$233.33			Remove
29	Sabal palm	Sabal palmetto	4	70%	4x4	\$233.33	\$233.33	\$233.33			Remove
30	Sabal palm	Sabal palmetto	18	70%	12x12	\$233.33	\$233.33	\$233.33			Remove
								\$8,698.67			

DEMO PLAN

John Sutton , ISA Arborist  
jsutton868@aol.com 561-493-3310



LOT Type And Size	TABLE 155.5203.C. MINIMUM DEVELOPMENT SITE LANDSCAPING	BACK ZONING DISTRICT
RS-1, RS-2, RS-3, RS-4, RS-5, RD-1, MHA-12	5 trees and 20 shrubs	1 tree and 5 shrubs per 3,000 sq ft of lot area or major fraction thereof
Corner lots no more than 7,000 sq ft in area	3 trees and 20 shrubs	1 tree and 5 shrubs per 3,000 sq ft of lot area or major fraction thereof
Other lots no more than 7,000 sq ft in area	6 trees and 30 shrubs	2 trees and 5 shrubs per 3,000 sq ft of lot area or major fraction thereof
Corner lots no more than 7,000 sq ft in area	4 trees and 30 shrubs	
Other lots no more than 7,000 sq ft in area		

ZONE RM  
REQUIRED: 1 tree and 5 Shrubs per 3,000 SF or Fraction there of  
PROVIDED: 22,500 SF developed = 23 Trees Required, and 115 Shrubs Required, Exceeds Site Minimum

NOTES:  
GENERAL PLANTING REQUIREMENTS

All sizes shown for plant material on the plans are to be considered Minimum. All plant material must meet or exceed these minimum requirements for both height and spread. Any other requirements for specific shape or effect as noted on the plan(s) will also be required for final acceptance. All plant material furnished by the landscape contractor shall be Florida #1 or better as established by "Grades and Standards for Florida Nursery Plants" and "Grades and Standards for Florida Nursery Trees". All material shall be installed as per CSI specifications. All plant material as included herein shall be warranted by the landscape contractor for a minimum period as follows: All trees and palms for 12 months, all shrubs, vines, groundcovers and miscellaneous planting materials for 90 days, and all lawn areas for 60 days after final acceptance by the owner or owner's representative. All plant material shall be planted in planting soil that is delivered to the site in a clean loose and friable condition. All soil shall have a well drained characteristic. Soil must be free of all rocks, sticks, and objectionable material including weeds and weed seeds as per CSI specifications. Twelve inches (12") of planting soil 50/50 sand/topsoil mix is required around and beneath the root ball of all trees and palms, and 1 cubic yard per 50 bedding or groundcover plants. All landscape areas shall be covered with Eucalyptus or sterilized seed free Melaleuca mulch to a minimum depth of three inches (3") of cover when settled. Cypress bark mulch shall not be used. All plant material shall be thoroughly watered in at the time of planting; no dry planting permitted. All plant materials shall be planted such that the top of the plant ball is flush with the surrounding grade. All landscape and lawn areas shall be irrigated by a fully automatic sprinkler system adjusted to provide 100% coverage of all landscape areas. All heads shall be adjusted to 50% overlap as per manufacturers specifications and performance standards utilizing a rust free water source. The system shall be installed with a rain sensor. It is the sole responsibility of the landscape contractor to insure that all new plantings receive adequate water during the installation and during all plant warranty periods. Deep watering of all new trees and palms and any supplemental watering that may be required to augment natural rainfall and site irrigation is mandatory to insure proper plant development and shall be provided as a part of this contract.

Special Note

No items to be stored higher than the screening wall or fence. All plant material shall be installed with fertilizer, which shall be State approved as a complete fertilizer containing the required minimum of trace elements in addition to N-P-K, of which 50% of the nitrogen shall be derived from an organic source as per CSI specifications. Contractors are responsible for coordinating with the owners and appropriate public agencies to assist in locating and verifying all underground utilities prior to excavation. All ideas, designs and plans indicated or represented by this drawing are owned by and are the exclusive property of Wayne K. Tanning, RLA. The plan takes precedence over the plant list. SPECIAL INSTRUCTIONS General site and berm grading to +/- 1 inch (1") shall be provided by the general contractor. All finished site grading and final decorative berm shaping shall be provided by the landscape contractor. All sod areas as indicated on the planting plan shall receive Stenotaphrum secundatum, St. Augustine 'Floritam' solid sod. It shall be the responsibility of the landscape contractor to include in the bid, the repair of any sod which may be damaged from the landscape installation operations.

DRC  
PZ23-12000054  
07/03/2024

TONNING & ASSOCIATES, INC.  
Landscape Architecture & Land Planning  
Landscape Architect - Florida License #6666709  
4855 NW 92 Terrace  
Coral Springs, Florida 33067  
Tel: 561-414-8269  
Email: wtonning@tonningdassociates.com

DRWG. TITLE : LANDSCAPE PLAN  
PROJECT : TOWNHOMES CANAL DRIVE  
POMPAHO BEACH, FLORIDA 33062  
CLIENT : THE BETAJONES GROUP

Wayne K. Tanning  
Digitally signed by Wayne K. Tanning  
Date: 2024.05.31 09:55:40 -0400

PROJECT NO. 23-109  
DRAWN BY WKT  
DESIGNED BY WKT  
CHECKED BY WKT  
DATE : 03-01-23  
DWG. NO. LP-1  
SHT. NO. 1 of 1  
REVISIONS : 05-17-24